



Addenda for the A+LS™ Teacher's Handbook

- Learning Letter Sounds™
and
- Emergent Reader Interface

Version 3.1, Release 8.5
June 2005



A+, A+nyWhere Learning System, A+dvanced Learning System, A+LS, and Learning Letter Sounds are either trademarks or registered trademarks of The American Education Corporation.

Because AEC has provided leading educational software products bearing the A+ logo for over 10 years, AEC was granted registered incontestable rights to the A+ logo for educational software in 1997.

The trade names and trademarks used throughout this book are not intended to convey endorsement of or other affiliations with this book.

© Copyright 2005 The American Education Corporation. All rights reserved. No part of this book may be reproduced, stored in a retrieval system, or transcribed, in any form or by any means, without the prior written permission of the publisher, The American Education Corporation, Oklahoma City, 73116.

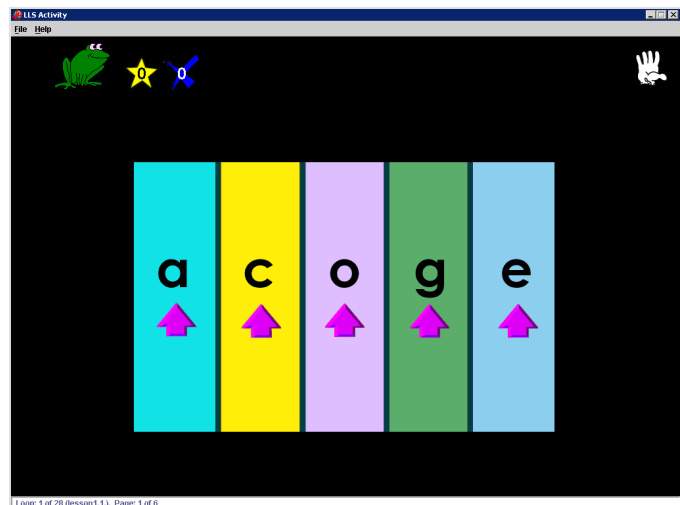
Printed in the United States of America

Addendum 1

The *Learning Letter Sounds*[™] Program

The American Education Corporation is proud to announce the release of the *Learning Letter Sounds*[™] (LLS) program for the *A+nyWhere Learning System*. This program is the first product of AEC designed expressly for Kindergartners or those who have no reading skills. *LLS* lessons are designed to teach learners the names and sounds of the letters of the alphabet and do much more to prepare them for reading instruction at a higher level.

The *LLS* title is the re-release of a program originally designed by Dr. Donald Durrell, one of the pioneers of modern research in reading. It is based on principles identified by the National Reading Panel, and incorporates phonemic awareness and phonic instruction, focusing on the names and sounds of letters and blending. In addition, the total experience exposes learners to a wide range of concepts that enhance language development. English Language Learners will come away with a greatly expanded vocabulary. This program has a long history of success in helping children learn to read.



The *LLS* program provides extensive, individualized practice designed for mastery of the concepts being taught in a game-like environment. The program is designed expressly for children who do not yet read, and utilizes a greatly simplified interface. There is no study, practice, test, or essay. The entire program flows based on the learner performance. Seldom do non-readers need any assistance to use *Learning Letter Sounds* lessons.

Because student responses in the instructional portion of *Learning Letter Sounds* lessons are recorded, student data for the instructional portion are stored as "Practice" in the *A+LS* database. Because the Practice Test results from other types of ALS Lessons are stored as "Practice" as well, these results for all types of lessons will now be reported simply as "Practice", not as "Practice Test". This is a change of report terminology for most types of ALS Lessons.

Student Navigation

Since the focus is on prereaders, the *LLS* program has a very simple interface. Lesson, activity, and page navigation are all automatic. Activities (pretest, content, post-test) are automatically loaded as necessary, so there are no Study, Practice, Mastery, and Essay activity menus. Likewise, when a lesson is complete, the next lesson is automatically presented to the student.

There are several student interfaces (screen styles) available. This guide uses screen shots and buttons from the *Emergent Reader* interface (see page 7), the recommended interface for *Learning Letter Sounds* lessons.

The *Learning Letter Sounds* Buttons

As you review the buttons listed below, note that there are no next or previous page buttons. In a *Learning Letter Sounds* lesson when a student completes the activity on a page, the next page automatically appears.



Repeat audio - Click on the frog and the audio prompts are repeated.



Correct answers - Each correct answer in the current activity adds one to this counter.



Incorrect answers - Each incorrect answer in the currently activity adds one to this counter.



Quit activity - Clicking on the “stop” hand will exit the activity.

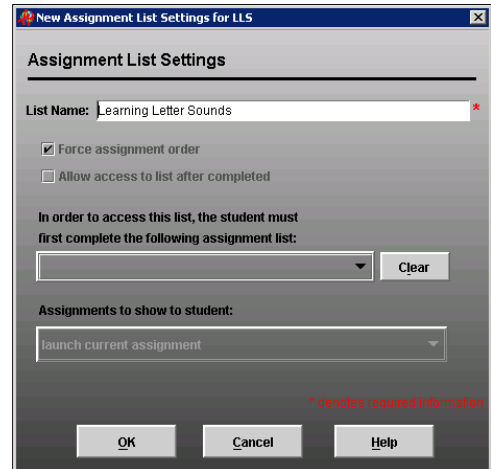
Creating LLS Lists and Assigning Lessons

Delivering *Learning Letter Sounds* lessons to your students is very easy. All you have to do is create an *LLS* assignment list and the lessons are automatically assigned.

1. Log on as a teacher or administrator with a class, then go to the *Assignment Management Window*.
2. In the left pane, under your class name, locate the name of the student to receive the new *LLS* assignment list.

- Please note that *LLS* lessons cannot be added to existing assignment lists. Due to the lesson and page sequencing and integrated review tests, they are always assigned to their own list.
3. **Right click** on the student's name, then select **Create New LLS List** from the popup menu.
 4. When *New Assignment List Settings for LLS* opens, you may edit the name of the list if you wish.

- You may notice that some of the normal ALS Lesson options are disabled (see the figure at right). This is because the lesson and page sequencing is important for the success of *LLS*.
- Later, if you decide to change the list settings, you'll notice that the same options are ghosted and unavailable.



5. Click **OK**, then **OK** again to confirm.
6. Open the new assignment list and note that it has already been populated with all of the *LLS* lessons.
 - The *LLS* learning experience is highly dependent on the precise sequencing of both the lessons and pages within the lessons. Both review tests and later lessons assume that the student has experienced specific prior lessons. So unlike other *A+LS* assignment lists, all you have to do is create the *LLS* list and your students are ready to start learning their letters and letter sounds.
7. Highlight one of the *LLS* lessons (not a review test) and note that there is no *Edit Settings* button in the right pane.
 - The mechanics of *LLS* lessons are different from other ALS Lessons, so the typical *A+LS* assignment options are unavailable.

Editing LLS List and Assignment Settings

The *LLS* learning experience is highly dependent on the precise sequencing of both the lessons and pages within the lessons. Both review tests and later lessons assume that the student has experienced specific prior lessons. So unlike other *A+LS* assignment lists, many of the normal ALS Lesson options are not available (see the following figure).

6 Handbook for Teachers

1. To change the *LLS* list options that are available, **right click** on the *LLS* assignment list and select **Edit List**.
2. When you have made your changes, click **OK** to save them.
3. Click **OK** again to confirm.

Due to the interdependencies between *LLS* lessons, the settings for individual *LLS* assignments can not be changed.

Edit Assignment List Settings

List Name: Learning Letter Sounds *

Force assignment order within list Mark this list as complete
 Allow access to list after completed

In order to access this list, the student must first complete the following assignment list:

Math for Me Clear

Assignments to show to student:

launch current assignment

The current assignment on this list is:

Clear

* Asterisk required information

OK Cancel Help

The *LLS* Student Progress Report

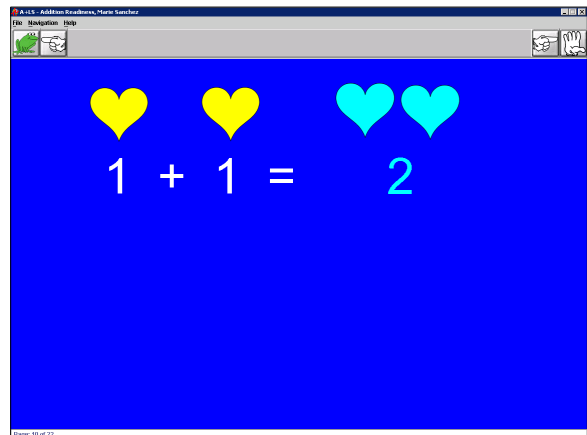
The *LLS Student Progress* report shows a student's progress within the *Learning Letter Sounds* curriculum. For more information on the report please consult *Details* in the report wizard.

1. Go to the *Assignment Management Window*, then click on the **Report Wizard** button.
2. When the *A+LS Report Wizard* dialog box opens, select the **LLS Student Progress** report.
3. If you want to learn more about the report, click on **Details**.
4. Using the wizard, select the class and student(s) to be covered in the report, clicking **Next** after each selection.
5. Select the header and footer information you want printed on the report, then click **Next**.
6. When the initial preview displays, you can choose to **Print Preview** or click **Cancel** to quit the report wizard.
7. Proceed to print as you would with any *A+LS* report (the individual steps vary depending on your operating system).

Addendum 2

The Emergent Reader Interface

A new *Emergent Reader* user interface has been designed to deliver *A+LS* lessons to your prereading students. If a student only has one assignment list (for example, just an *LLS* or *Mathematics I* list) and just one class, after logging on the student is taken directly to the first available lesson. The student will only see intervening menus if they need to choose between multiple classes or assignment lists. This keeps things as simple as possible for your prereaders.



The new interface can be used to deliver any ALS Lesson or other component supported by the other *A+LS* user interfaces. You can assign the *Emergent Reader* user interface when adding new students or editing existing ones. The *Add User* and *Edit User* dialog boxes' Interface drop box now includes *Emergent Reader*; along with the other *A+LS* user interfaces (Adult, Intermediate, Primary, etc.).

Common Emergent Reader Interface Buttons

It is highly recommended that your youngest students use the *Emergent Reader* interface when working with lessons from *A+LS* first grade level titles, such as *Mathematics I* and the *Learning Letter Sounds* program.



Go to the next page - Goes to the next screen on a lesson or test. If it is grayed out, there is no next page.



Go back one page - Works like the back button in a web browser. If it is grayed out, there is no previous page.



Stop this activity - When in lessons, taking a test, or writing an essay this button exits the activity. To avoid accidentally logging out from the menus, we suggest using the *Back* button instead.



Repeat audio - Click on the frog and the audio prompts are repeated.



Go to/exit study guide - In *Practice* tests, clicking this button will let you go back to the study guide. Clicking it again will return you to the *Practice* test. It is not available in the real tests.



Show answers - After you complete a *Practice* or *Mastery* test, you may get the chance to review the questions. When reviewing test questions, click on the blue checkmark button to switch between your answer and the correct answer.



Save - While working on an Essay, the student clicks on the save button to record their work.



Red apple - It's not a button, but when there is a red apple next to an assignment in a student's assignment list, you know that the student has mastered all parts of the assignment.

Assigning the Emergent Reader Interface to Your Students

To convert an existing user to use the new *Emergent Reader* interface:

1. Log on as a teacher or administrator with at least one class and the right to edit user information, then go to the *Assignment Management Window*.
2. **Right click** on the student's name under your class, then select **Edit User**.
3. After the *Edit User* dialog box opens, click on the **Interface** drop box.
4. Select **Emergent Reader** from the list of interfaces (circled in the figure at right).
5. Click **OK** and again to confirm.

A screenshot of the 'Edit User' dialog box. The dialog has a title bar with a close button. It contains several input fields: 'First Name' (Marie), 'Middle Name' (empty), 'Last Name' (Sanchez), 'Other Name' (empty), 'User ID' (empty), 'Log-on Name' (ms), and 'Password' (ms). There are three red asterisks next to the First Name, Last Name, and Log-on Name fields. Below these are dropdown menus for 'Type' (student), 'Grade Level' (First), and 'Interface' (Adult). The 'Interface' dropdown is open, showing a list of options: 'Adult', 'Emergent Reader', 'Intermediates', 'Management Only', 'Primary', 'Secondary', and 'Thin Client'. The 'Emergent Reader' option is highlighted in blue and circled with a red oval. A red arrow points down from the bottom of the list towards the 'Change Right' button at the bottom left of the dialog.

The next time the student logs onto the *A+LS* system, all of his or her lessons will be delivered using the *Emergent Reader* interface.

When creating new student accounts, the *Add User* dialog box now offers the *Emergent Reader* interface along with all of the other *A+LS* interfaces. Follow the normal add user procedure and use the *Interface* drop box to select the appropriate interface for your students.

This page intentionally left blank.